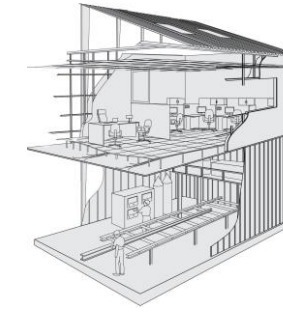
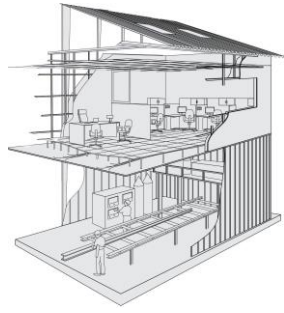




MATRIX

WWW.MATRIXAMERICAS.COM

3400 Awesome Lane,
La Porte, Texas 77571,
Tel: + 1-2025097853, + 1-8328009005
E-mail: sales@matrixamericas.com



MATRIX FIBRE CEMENT BOARDS



Matrix Fibre Cement Boards are manufactured using state-of-the-art Hatschek manufacturing process using basic mix of raw materials cement, cellulose pulp fibres and additives. Raw material composition for each Batch Board is controlled using Microprocessor based Batch Controllers and Programmable Logic Controllers. Matrix Fibre Cement Boards are manufactured in various thicknesses ranging from 3.2mm to 25mm with the help of Online Thickness Control System.



Matrix Heavy Duty Fibre Cement Boards are manufactured using Hydraulic Press which increases strength, density and durability of the Boards.



Matrix Boards for ceiling and wall solutions are manufactured in various textured surface finishes and flat surface with variety of paint coated surface finishes, using state-of-the-art paint coating technology on an automatic paint coating line. These boards are cured in Autoclaves at high temperature and under high pressure steam.

After curing, boards are tested for performance quality parameters as per American Standards and Customer's Specifications, before they are released for finishing, packaging and dispatch from the factory.

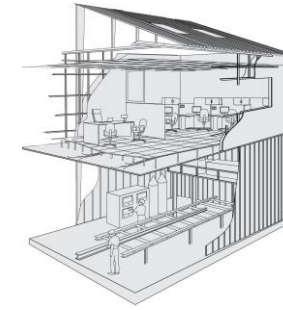
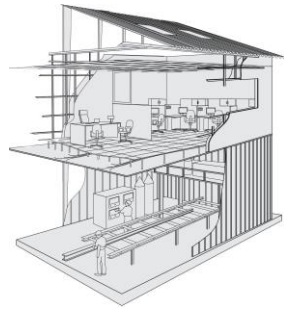
MANUFACTURING PROCESS

The Fibre Cement Boards are manufactured using the Hatschek process, which involves several laminations of slurried mix of care ingredients on a large steel cylinder known as the 'BOLE' (with a specific embossed pattern for Designer Bards). When the desired thickness is achieved, the green/wet' boards is cut and put in a conveyer where it is trimmed to size and then stacked and left for a short period of pre-curing.

The final curing is done through autoclaving that involves High Pressure Steam Curing (HPSC). This hydration process changes the chemical structure of the cement/silica & quartz and selected mineral fibre matrix to produce a highly durable and versatile fibre cement building board. After autoclaving, the boards are allowed to go through a short stabilization period to bring about equilibrium with the ambient moisture content a controlled environment.

Matrix Designer Boards come with a unique self-embossed design and at least 2 coats of 100% water based acrylic cement primer on both surfaces and all edges, so that they are ready paint for your interiors.

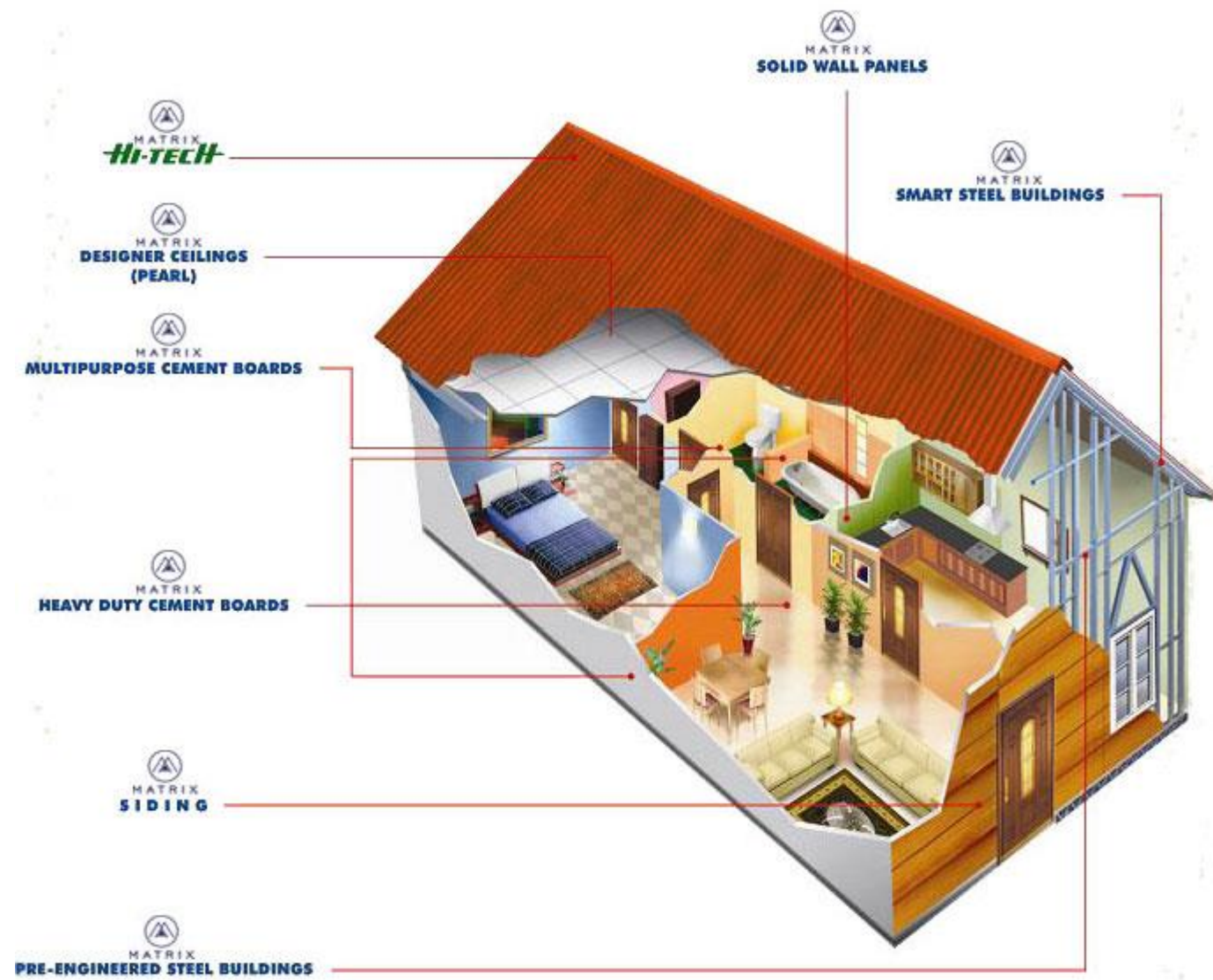
Matrix Heavy Duty Fibre Cement Board is compressed in a 12000 MT Hydraulic Press to make it compact and rigid. The and product is a dense, flat compressed cement board with a smooth surface and neat square edges, making it suitable for a variety of exterior, flooring and wet-area cladding applications.

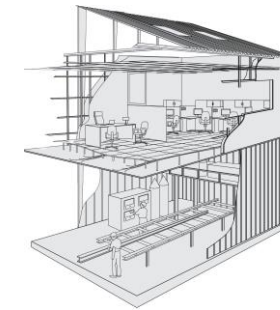
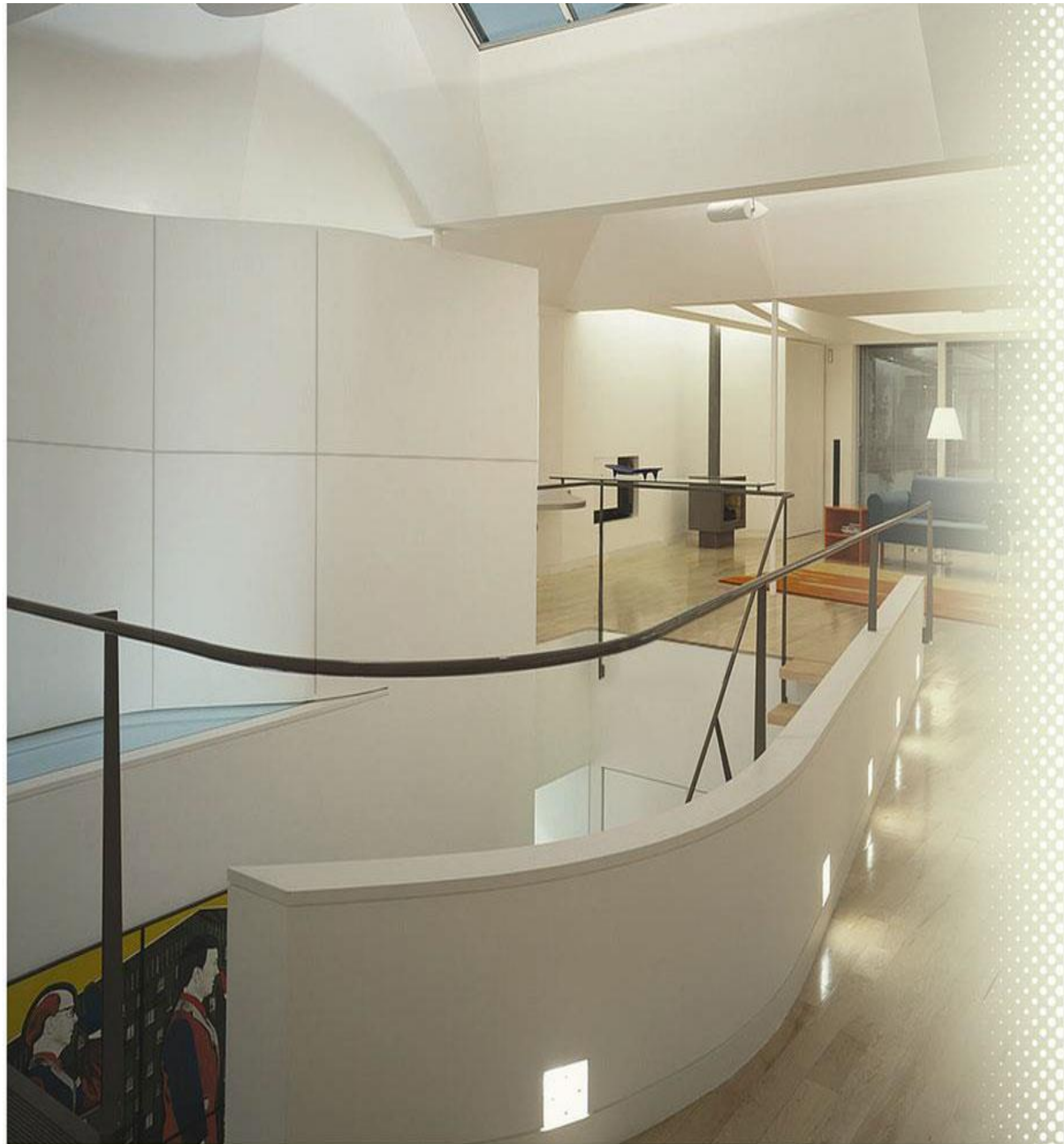


FIBRE CEMENT BOARDS

COMPOSITION

Matrix range of Fibre Cement Board is manufactured is from a homogeneous mixture of Portland cement, treated cellulose fibres, finely ground silica quartz and other selected mineral fillers in a state-of-the-art unit using sophisticated, digitally controlled processes. The principle components of the mixture are cement and cellulose fibre. Cement acts as a hydraulic binder and the cellulose fibres interlock with the cement and quartz matrices to add strength to the boards. No asbestos is used during the entire process, making Matrix products 100% asbestos free and environment friendly.





MULTIPURPOSE CEMENT BOARDS

The new age Matrix Multipurpose Cement Board is made using the revolutionary HPDC technology. This unique technology makes these boards' totally moisture resistant, termite and fire resistant. These boards are ideal for residential, commercial and industrial usage.

Matrix Multipurpose Cement Board, in combination with different substrate framework utilization to the maximum along with substantial savings on time. It gives the architects major flexibility of changing designs with thermal & acoustic insulation being maintenance free and highly durable.

Matrix Multipurpose Cement Boards provide both uniform gap/groove and monolithic joint less finish (using specially made beveled-edges boards). These boards allow you to build your imagination through a range of finishes with paints, wall papers, texture coating, veneers etc.

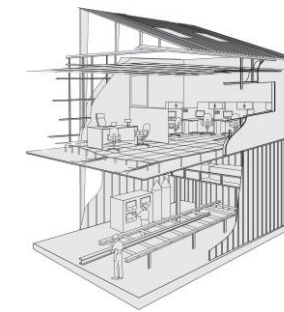
AREAS OF APPLICATION

- False Ceiling
- Internal Walls – Half Height/Full Height
- Internal Wall Lining
- Eaves and Soffit Lining
- Pre-fabricated Shelter – Internal/External walls

FINISHING CHOUSE



** We can also provide factory finished primer or painted of board on request, as per international .*



HEAVY DUTY CEMENT BOARDS

Whenever your concern is durability, strength and prolonged exposure of walls to weathering elements like sun, rain and UV rays, think of Matrix Heavy Duty Cement Boards.

Matrix Heavy Duty Cement Boards help create both internal and external walls which are impact resistant, load bearing and require minimal maintenance. They are ideally suited for commercial and industrial applications.

These Boards are exceptionally stable in dimension and offer resistance to damages caused by permanent dampness or seepages. They are excellent for all kind of internal wet area lining especially in the residential segment.

Matrix Heavy Duty Cement Boards can be combined with a wide range of surface finishes like laminates, ceramic / vitreous tiles, paints, render etc. which allows you to "Build your imagination"

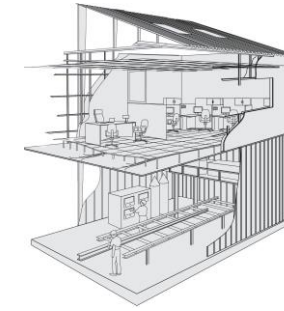
AREA OF APPLICATION

- Internal Walls – High traffic/Impact prone areas Residential/Commercial/Industrial
- Wet Area Lining – Kitchen, Bathrooms
- Commercial Flooring
- Rain Screening/Substrate for Render
- External Wall Cladding/Bracing Non Load Bearing/ Load Bearing Walls/ Residential/ Commercial/ Industrial/ Cladding Walls in Warehouses/Factories
- Pre-fabricated Shelter – Internal / External walls

FINISHING CHOICES



* We can also provide factory finished primer or painted of board on request, as per international .



DESIGNER CEMENT BOARDS

Design plays a vital role in creating the ambience of a house, office or any other commercial place. Designer Cement Boards help in bringing out the best of walls and ceilings. Matrix Designer Cement Boards provide solutions along with strength and durability. Walls and ceilings made out of Matrix Designer Cement Boards are fire and moisture resistant, termite proof, self-embossed, pre-primed and ready to paint, making them unique walling and paneling solutions for residential, commercial and institutional use.

Matrix Designer Cement Boards offer a surface which can be painted or polished in a variety of choices. These environment – friendly Designer Cement Boards along with flexibility of various finishing options help designers and architects to create a unique space character.

AREAS OF APPLICATION

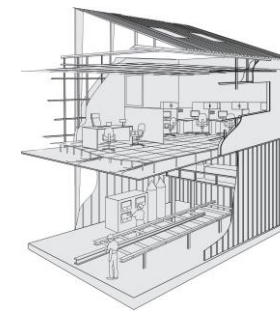
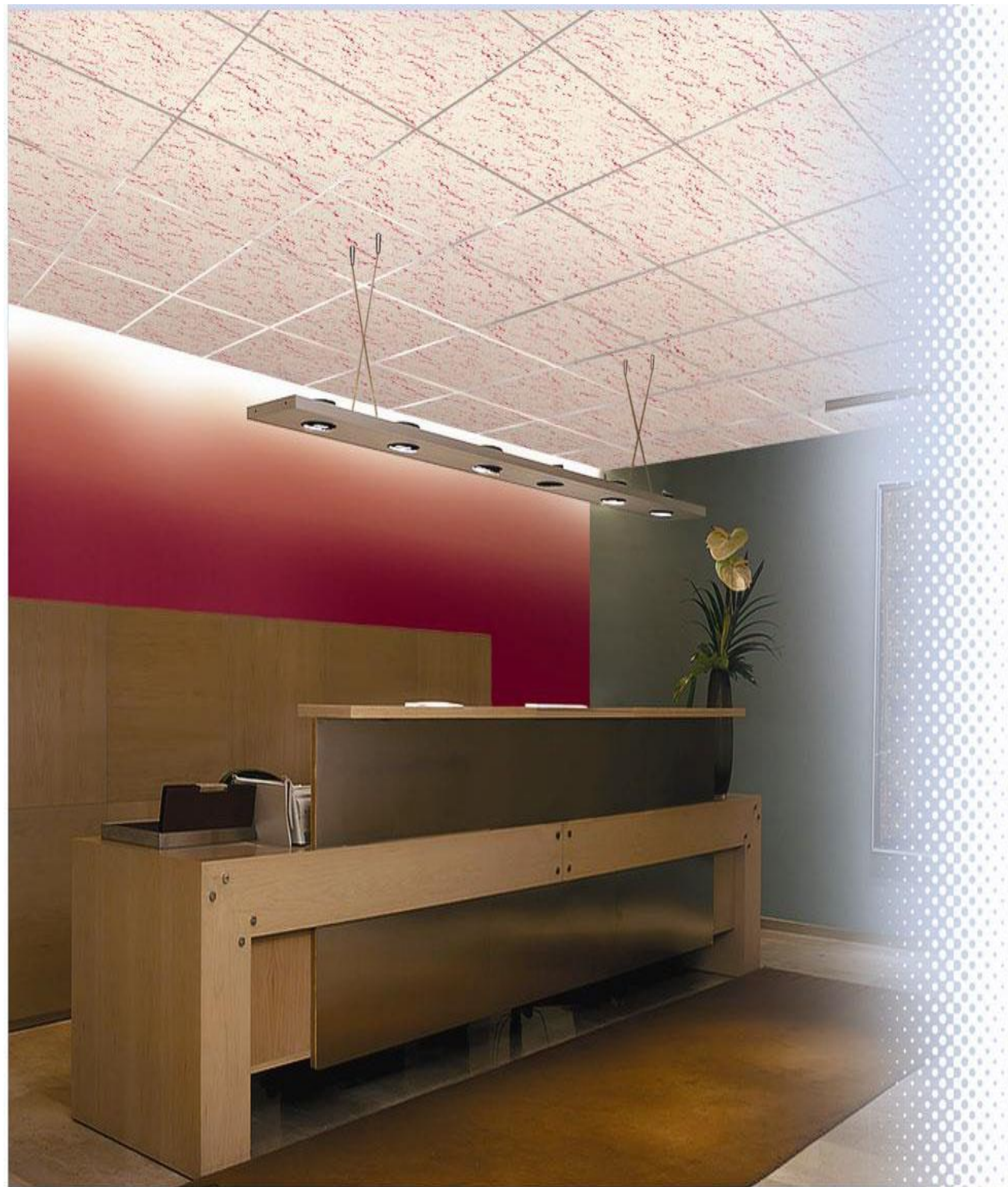
- Internal Walls – Half Height/Full Height
- Internal Wall – Lining*/Paneling
- Ceilings

**Wall lining – to cover damp/seepage prone walls.*

AVAILABLE RANGE*



**Cascade, Lake and Hill and Polygon are only available in white pre-primer finish
 **Brick is available in above indicative finish, ready to install for exterior applications*



MATRIX PEARL – DESIGNER CEILING TILES

Matrix Pearl is yet another innovative and exemplary product from Matrix, designed to give your dream interior its deserved elegance and beauty.

Matrix Pearl is made with HPSC (autoclave), fibre cement reinforced multi-purpose cement board, finished with a superior PVC paint with UV coating of overall thickness of 300 microns, making it the most sought – after product for both residential and commercial usage.

These ready to install tiles are available in a wide range of attractive textures and finishes. Pearl Designer Ceiling Tiles ensure long term performance to help you enjoy exquisite interiors forever.

AREAS OF APPLICATION

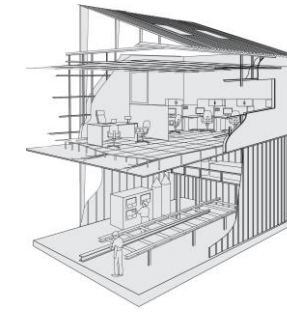
- Kitchens
- Toilets
- Washrooms
- Laboratories
- Health care facilities



**The above designs are only indicative and actual colours may vary from the above.*

SUPERIOR ATTRIBUTES





MATRIX SIDING

Matrix Siding is an attractive and aesthetically pleasing fibre cement product, manufactured in our state-of-the-art ultra modern plant. Matrix Siding comes in many different sizes and smooth or textured surfaces, and given a perfect wood appearance without any flaws and knots.

Matrix Siding comes in yellow pre primed [exterior grade] with deep wood grain texture which can be finished with Burma Teak, Golden Beach and Walnut finishes.

AREAS OF APPLICATION

- External Wall
- Eaves and Soffit Lining
- Fascias

PRIMER



FINISHING CHOICES*



Burma Teak

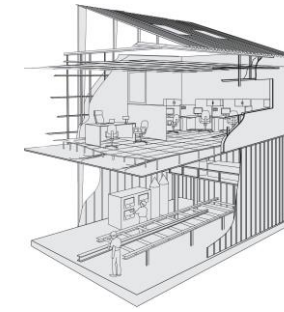
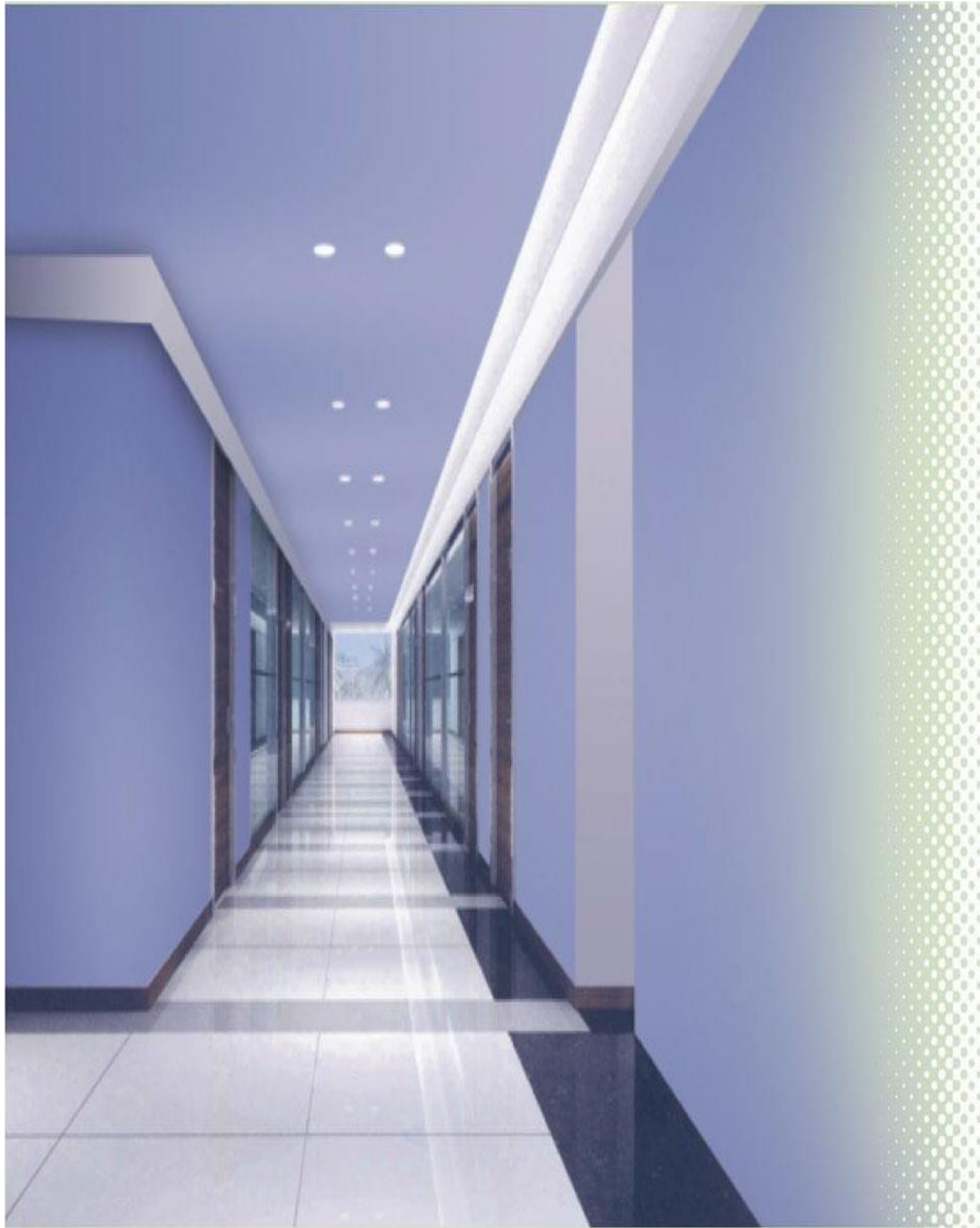


Golden Beech



Walnut

**These are indicative finishes*



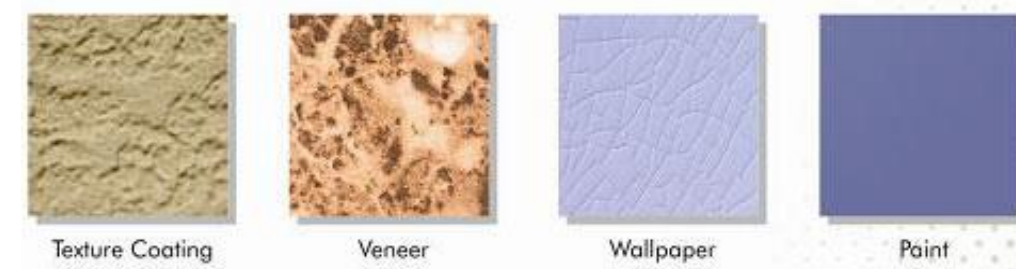
SOLID WALL PANELS

In today's fast paced world, time is of the essence. Matrix Solid Wall Panels enable efficient construction with the promise of Strength, Speed and Safety. Matrix Solid Wall Panels are sandwich panels made out of Fibre Reinforced Aerated Cement Concrete (FRACC) and Matrix Wall Boards. These panels maintain the solid effect of a conventional brick or block wall and stand as an epitome of speedy and elegant wall solution that is compatible with a host of surface finishing choices like paint, veneers, texture coating and wallpaper. Their unique tongue and groove joining system facilitates rapid construction and maximizes space utilization.

ADVANTAGES

- Speed – 20 times faster
- Space – 3 to 5% additional
- Light Weight – 90% lighter than brick/block wall
- Fire Rating > 2hours

FINISHING CHOICES



SUPERIOR ATTRIBUTES



AREAS OF APPLICATION

**Technical details available on request*